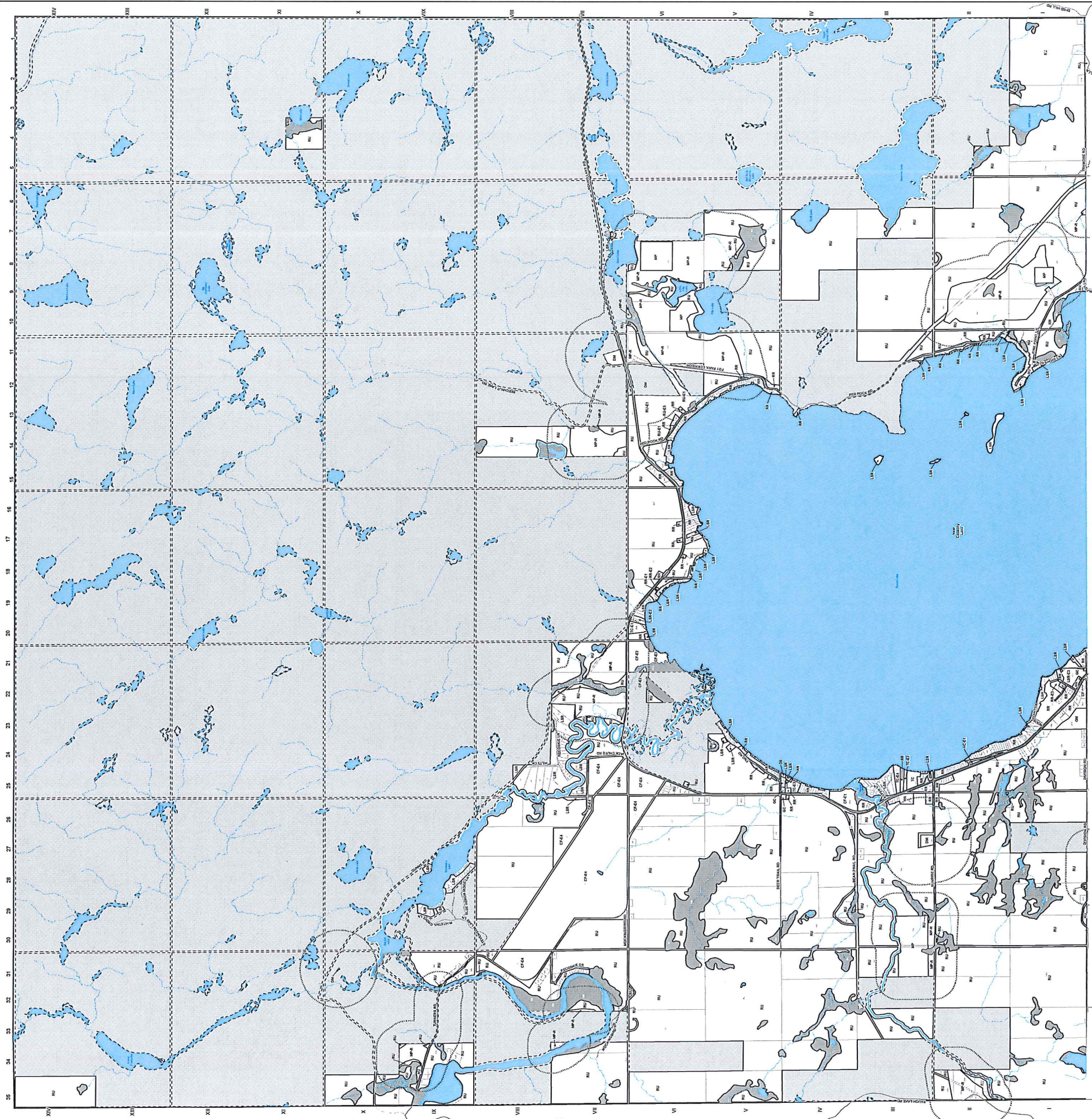




Killaloe, Hagarty & Richards
Zoning By-Law
Map 1 - Richards
DRAFT MAP V1
August 2023

For Review Purposes Only



- Provincial Highway
- County Road
- Crown Road
- Municipal Maintained Road
- Municipal Seasonal Road
- Private Road
- Intermittent - Watercourse
- Permanent - Watercourse
- Property Parcel
- Near Capacity Lake
- CF - Community Facility
- CL - Crown Land
- D - Development
- Intermittent - Watercourse

- DM - Disposal Industrial
- EP - Environmental Protection Area
- EP - Environmental Protection Area - E - Exceptions
- GC - General Commercial
- GM - General Industrial
- HC - Highway Commercial
- LSR - Limited Service Residential
- MSC - Main Street Commercial
- MP - Mineral Aggregate Pit
- MF-R - Mineral Aggregate Pit - Reserve
- OS - Open Space

- R1 - Residential One
- R2 - Residential Two
- RU - Rural
- RR - Rural Residential
- TC - Tourist Commercial
- Water

* Note
 DM - Disposal Industrial
 EP - Environmental Protection Area
 EP-E - Environmental Protection Area - E - Exceptions
 GC - General Commercial
 GM - General Industrial
 HC - Highway Commercial
 LSR - Limited Service Residential
 MSC - Main Street Commercial
 MP - Mineral Aggregate Pit
 MF-R - Mineral Aggregate Pit - Reserve
 OS - Open Space

Zone	Feature	Separation Distances	Required Minimum
EP-E1	Provincially Significant Wetland (PSW)		500 metres
EP-E2	Area of Natural and Scientific Interest - Life Science (ANSI)		120 metres
EP-E3	Area of Natural and Scientific Interest - Earth Science (ANSI)		120 metres
MP and MP-R	Sand and Gravel Resource and Licensed Pit		50 metres
MQ and MQ-R	Bedrock Resource and Quarry		300 metres
			500 metres

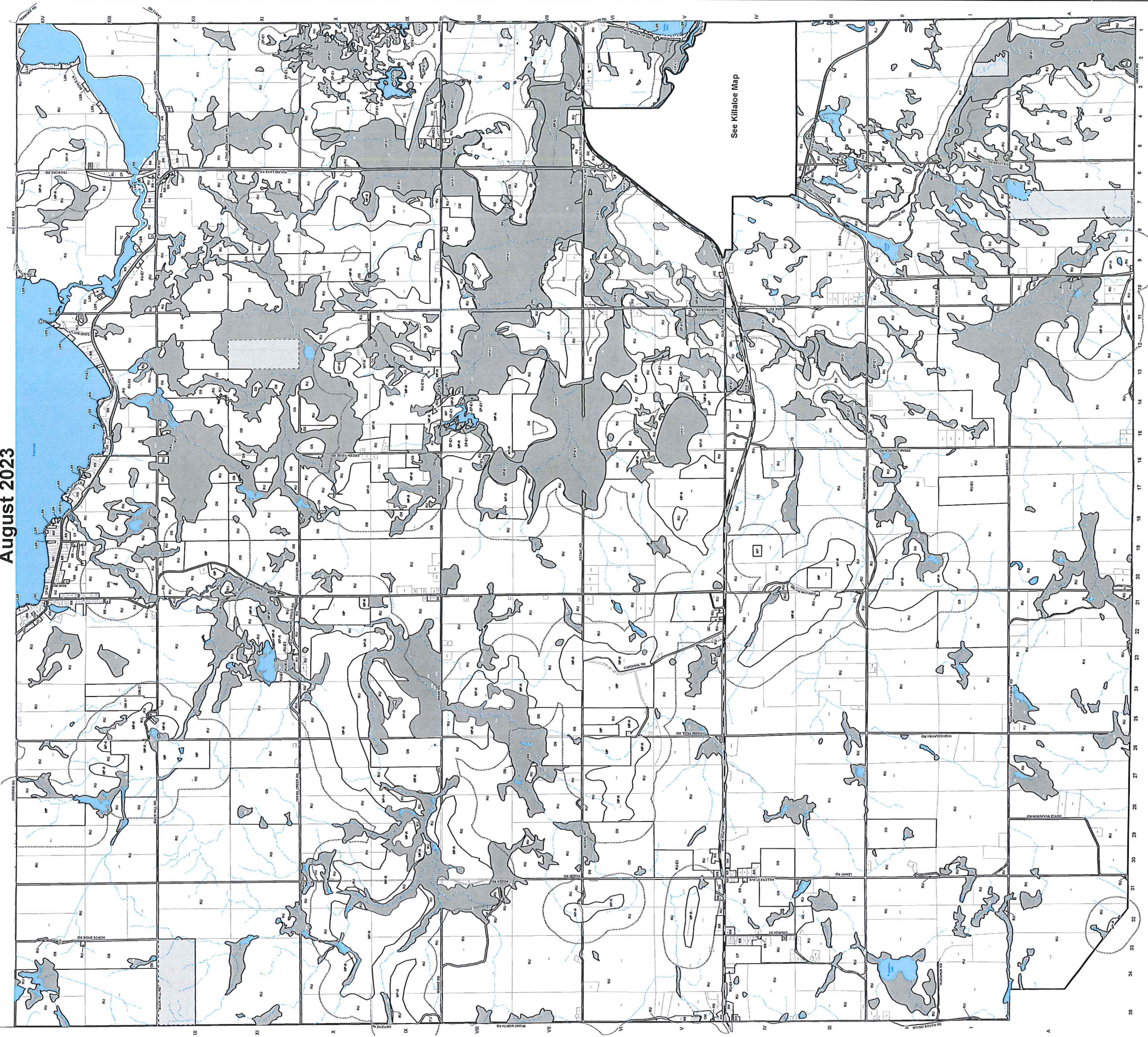


Renfrew Engineering & Planning
 1000 Highway 104, Unit 104
 Killaloe, Ontario N0G 1S0
 Phone: (519) 875-1111
 Fax: (519) 875-1112
 Email: info@renfreweng.com
 Website: www.renfreweng.com



Killaloe, Hagarty & Richards
Zoning By-Law
Map 2 - Hagarty
DRAFT MAP V1
August 2023

For Review Purposes Only



Legend

- Provincial Highway
- County Road
- Crown Road
- Municipal Maintained Road
- Municipal Seasonal Road
- Private Road
- Intermittent - Watercourse
- Permanent - Watercourse
- Property Parcel
- Near Capacity Lake
- CF - Community Facility
- Crown Land
- D - Development
- DM - Disposal Industrial
- EP - Environmental Protection Area
- EP-E - Environmental Protection Area - Exception
- E - Exceptions
- GC - General Commercial
- GM - General Industrial
- HC - Highway Commercial
- LSR - Limited Service Residential
- MSC - Main Street Commercial
- MP - Mineral Aggregate Pit
- MP-R - Mineral Aggregate Pit - Reserve
- OS - Open Space
- R1 - Residential One
- R2 - Residential Two
- RU - Rural
- RR - Rural Residential
- TIC - Tourist Commercial
- Water

*** Note**

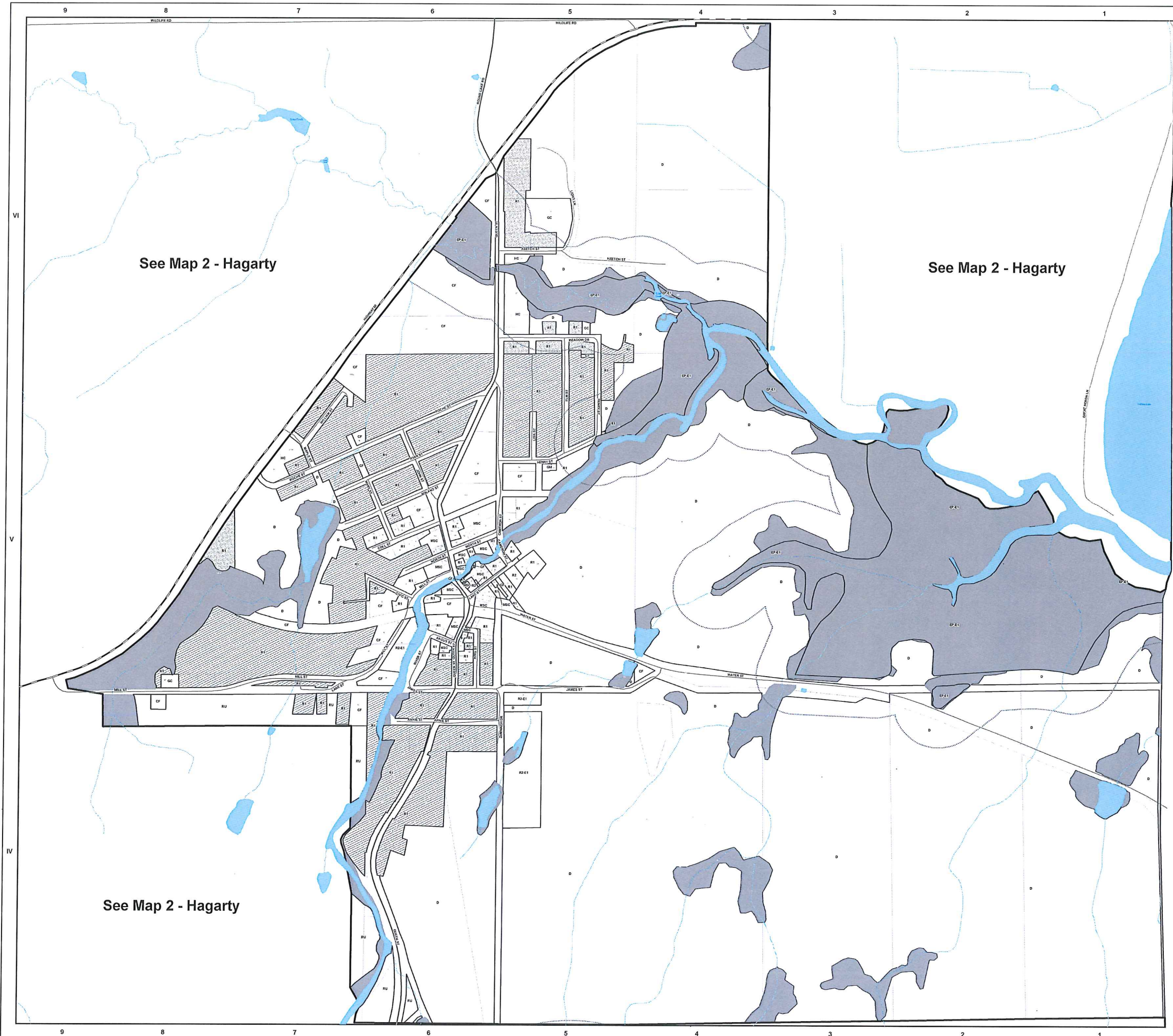
Zone	Separation Distances
DM	Facility
EP-E1	Waste Disposal Site
EP-E2	Provincially Significant Wetland (PSW)
EP-E3	Area of Natural and Scientific Interest - Life Science (ANSI)
EP-E4	Area of Natural and Scientific Interest - Earth Science (ANSI)
EP and other	Soil and Ground Resource and Licensed Pit
EP and other	Redox, Resource and Quarry

Scale: 0 0.25 0.5 1 1.5 2 km

Renfrew
 Municipal Planning Department
 1000 Highway 100, Renfrew, Ontario
 August 1, 2023



Killaloe, Hagarty & Richards Zoning By-Law Killaloe Inset Map 3 DRAFT MAP V1 For Review Purposes Only August 2023



- Provincial Highway
 - County Road
 - Crown Road
 - Municipal Maintained Road
 - Municipal Seasonal Road
 - Private Road
 - Intermittent - Watercourse
 - Permanent - Watercourse
 - Property Parcel
 - Near Capacity Lake
 - CF - Community Facility
 - CL - Crown Land
 - D - Development
 - DM - Disposal Industrial
 - EP - Environmental Protection Area
 - EP-E - Environmental Protection Area - Exception
 - - E - Exceptions
 - GC - General Commercial
 - GM - General Industrial
 - HC - Highway Commercial
 - LSR - Limited Service Residential
 - MSC - Main Street Commercial
 - MP - Mineral Aggregate Pit
 - MP-R - Mineral Aggregate Pit - Reserve
 - OS - Open Space
 - R1 - Residential One
 - R2 - Residential Two
 - RU - Rural
 - RR - Rural Residential
 - TC - Tourist Commercial
 - Water
- Service Type**
- No Service
 - Partial Service

* Note
Separation Distances

Zone	Feature	Required Minimum
DM	Waste Disposal Site	500 metres
EP-E1	Provincially Significant Wetland (PSW)	120 metres
EP-E2	Area of Natural and Scientific Interest - Life Science (ANSI)	120 metres
EP-E3	Area of Natural and Scientific Interest - Earth Science (ANSI)	50 metres
MP and MP-R	Sand and Gravel Resource and Licensed Pit	300 metres
MQ and MQ-R	Bedrock Resource and Quarry	500 metres